

APPLICATIONS

- ✧ Cell Phone CCD Camera Lines.
- ✧ Protection for I/O Ports and Keypads.
- ✧ LCD and Camera Data Lines.

IEC COMPATIBILITY

- ✧ IEC61000-4-2 (ESD) $\pm 15\text{kV}$ (air), $\pm 8\text{kV}$ (contact).
- ✧ IEC61000-4-4 (EFT): 40A - 5/50ns.

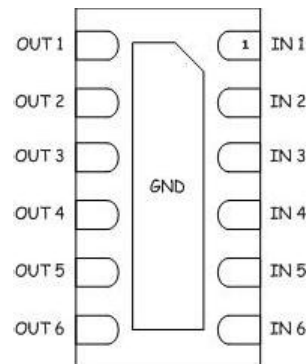
FEATURES

- ✧ R/C Values of 100 and 17 pF deliver Exceptional S21 Performance Characteristics of 110 MHz f3dB and -30 dB Stop Band Attenuation from 800 MHz to 3.0 GHz.
- ✧ TVS working voltage: 5V.
- ✧ Resistor: $100\Omega \pm 20\%$.
- ✧ Typical Capacitance: 34pF (VR = 2.5V).
- ✧ Protection and filtering for six lines.
- ✧ Solid-state technology.
- ✧ RoHS Compliant.

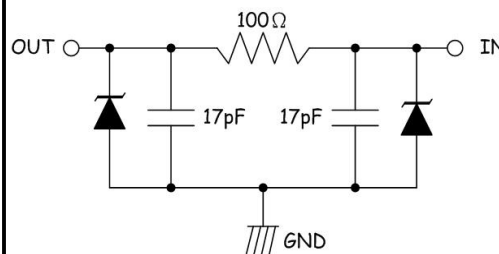
MECHANICAL CHARACTERISTICS

- ✧ Nominal Dimensions: 3.0 x 1.35 x 0.50 mm.
- ✧ Molding Compound Flammability Rating : UL 94V-O.
- ✧ Quantity Per Reel : 3,000pcs.
- ✧ Reel Size : 7 inch.
- ✧ Lead Finish : Lead Free.

DFN3014



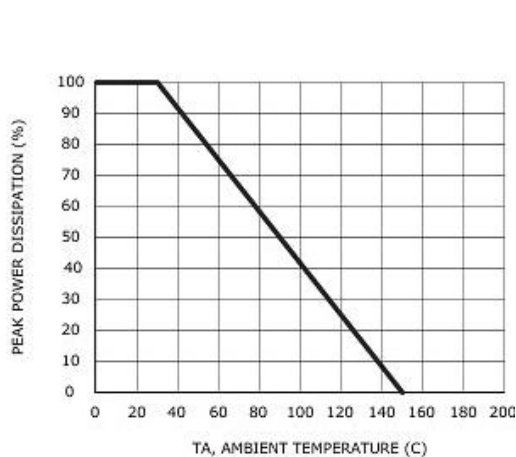
PIN CONFIGURATION



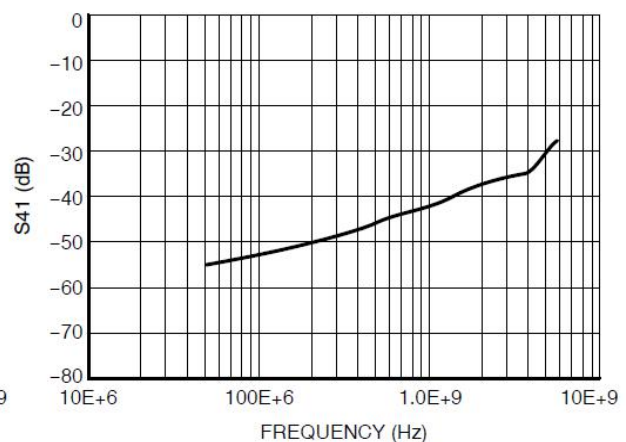
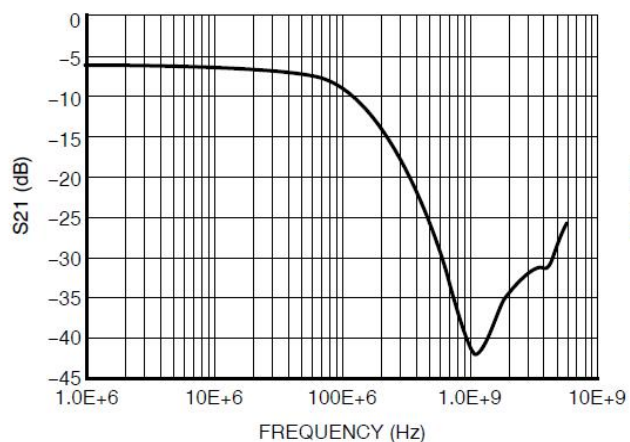
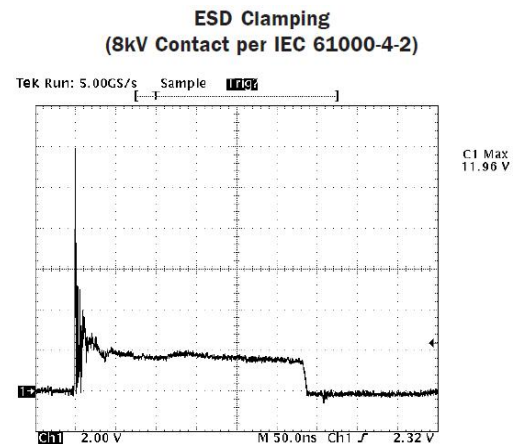
DEVICE CHARACTERISTICS

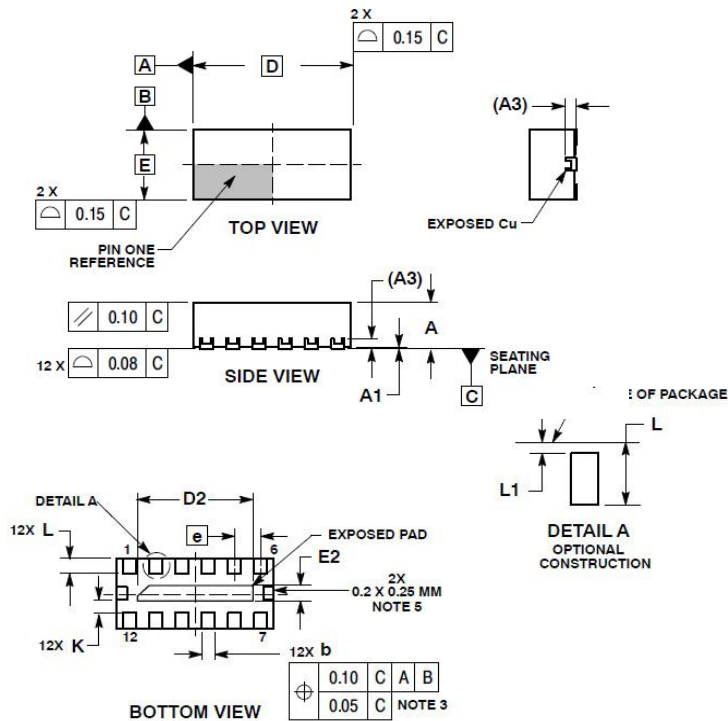
MAXIMUM RATINGS (@ 25°C Unless Otherwise Specified)			
PARAMETER	SYMBOL	VALUE	UNITS
Lead Soldering Temperature	T _L	260 (10 sec.)	°C
Junction Temperature	T _J	125	°C
Operating Temperature Range	T _{OP}	-40 ~ 85	°C
Storage Temperature Range	T _{STG}	-55 ~ 150	°C

ELECTRICAL CHARACTERISTICS PER LINE (@ 25°C Unless Otherwise Specified)									
PART NUMBER	DEVICE MARKING	V _{RWM}	V _B	I _R	R	F3dB	F6dB	C _{TDIODE} @2.5V	C _{TLINE} @2.5V
		(V) (max.)	(V) (min.)	(μA) (max.)	(Ω) (Typ.)	(MHz) (Typ.)	(MHz) (Typ.)	(pF) (typ.)	(pF) (typ.)
EM6401M	M6A	5	6.0	1	100	105	170	17	34

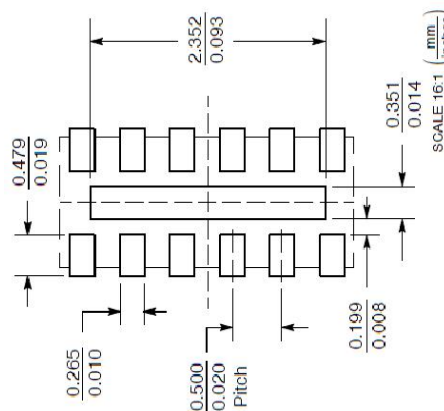


Power Derating Curve



DFN3014 PACKAGE OUTLINE & DIMENSIONS


DIM	MIN	MAX
A	0.80	1.00
A1	0.00	0.05
A3	0.20	REF
b	0.18	0.30
D	3.00	BSC
D2	2.10	2.30
E	1.35	BSC
E2	0.20	0.40
e	0.50	BSC
K	0.20	---
L	0.20	0.40
L1	0.00	0.15

*** SOLDERING FOOTPRINT**

 Website: <http://www.jksemi.com>

For additional information, please contact your local Sales Representative.

©Copyright 2016, jksemi